



KINGSTONS



Lowbourn

Melksham SN12 7DZ

- South Facing Garden
- Fantastic Condition
- Two Bathrooms and Utility Space
- Characterful Period Property
 - Three/Four Bedrooms
- Stunning Conservatory Space

£315,000 Freehold





Porch

Door and window to front elevation, underfloor heating and opening to utility.

Utility

7'11" x 7'4"

Fitted with a range of base and eye level units with worktop space over, space for freezer and washing machine, Boiler cupboard, underfloor heating, radiator and doors to bathroom and kitchen.

Bathroom

Fitted with a four piece suite comprising bath and separate shower, wash hand basin and WC, window to front elevation, underfloor heating and heated towel rail.



Kitchen

7'10" x 11'6"

Fitted with a matching range of base and eye level units with worktop space over, sink with mixer tap, integrated fridge and slimline dishwasher, space for range cooker, window to rear elevation, radiator, door to living room and double doors to Conservatory.

Living Room

8'10" x 16'1"

Window to rear elevation, stairs to first floor with under stairs storage and radiator.

Conservatory

Window to rear and side elevations and bi-fold doors to garden.

Landing

Stairs to second floor and doors to bedrooms two to four.

Bedroom Two

8'11" x 13'0"

Window to rear elevation fitted wardrobes and radiator.

Bedroom Three

9'6" x 7'10"

Window to front elevation and radiator.

Bedroom Four/Office

8'6" x 7'11"

Window to rear elevation.

Landing

Door to bedroom one.

Bedroom One

9'1" x 11'6"

Windows to rear and side elevations, radiator and door to en-suite.

En-suite

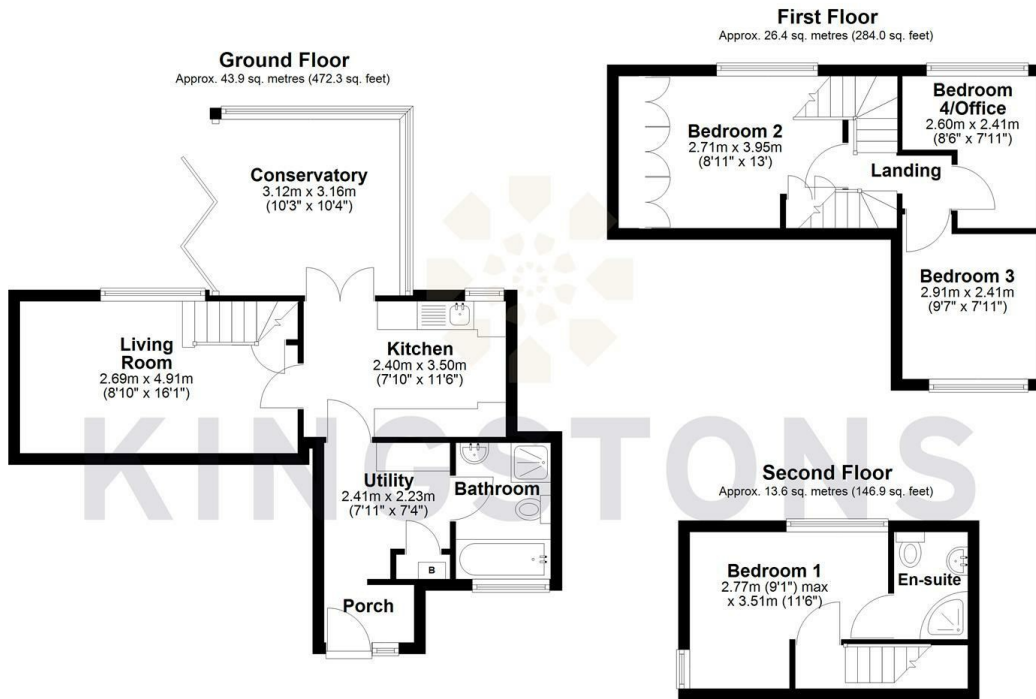
Fitted with a three piece suite comprising shower cubicle, wash hand basin and WC with heated towel rail.

Outside

Enclosed south facing garden with side access.



Local Authority **Wiltshire**
Council Tax Band **B**
EPC Rating **D**



Total area: approx. 83.9 sq. metres (903.2 sq. feet)




KINGSTONS
Melksham Office

11 High Street, Melksham,
Wiltshire, SN12 6JR

Contact

01225709115
sales@kingstons.biz
www.kingstons.biz

Agents Note: Whilst every care has been taken to prepare these particulars, they are for guidance purposes only. All measurements are approximate and for general guidance purposes only and whilst every care has been taken to ensure accuracy, they should not be relied upon and potential buyers/tenants are advised to recheck the measurements.